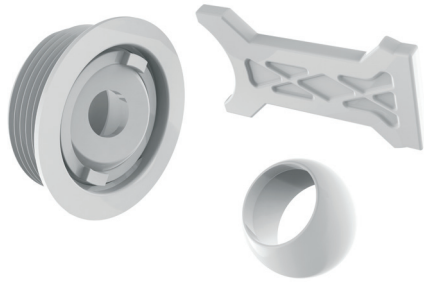
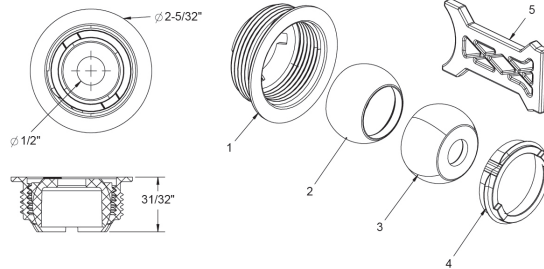


**Product Image and Dimensions**



**Part # JOxxx**



- 1. Retrofit Body, 1-1/2" MPT
- 2. Standard Eyeball, 1" Orifice
- 3. Standard Eyeball, 1/2" Orifice
- 4. Retrofit Locking Nut
- 5. Retrofit Nut Wrench

**FEATURES**

- Threads into 1 1/2" FPT
- Includes wrench, retro-fit nut, retro-fit socket, 1/2" eyeball and 1" eyeball
- Fits flush inside flush mount fittings
- Changes color of existing fitting
- Makes existing old fitting look new
- Eliminates the need to chip out the old fitting

50 per case

**STANDARD COLORS**

- JO101
- JO102
- JO103
- JO104
- JO105
- JO108

Comes with 1/2" and 1" eyeballs.

Additional orifice sizes available separately, comes with locking nut. See part numbers below:  
ENBxxx - 3/4"  
ENDxxx - Slotted Down-Jet

**AquaStar Specific Eyeball GPM, Velocity and Head Loss Ratings**

GPM	ENxxx (1")		ENBxxx (3/4")		ENCxxx (1/2")		ENDxx (Down-Jet)	
	Velocity (fps)	Head Loss (ft)	Velocity (fps)	Head Loss (ft)	Velocity (fps)	Head Loss (ft)	Velocity (fps)	Head Loss (ft)
5	2.2	0.1	3.6	0.5	8.2	2.4	10.1	2.1
10	4.4	0.5	7.3	1.8	16.3	8.7	20.2	8.1
15	6.6	1.1	10.9	3.7	24.5	18.6	30.3	20.7
20	8.8	1.9	14.5	6.2	32.4	32.0		
25	11.0	3.0	18.2	9.4				
30	13.2	4.4	21.8	13.1				
35	15.4	6.1	25.4	17.3				
40	17.6	8.0						
45	19.7	10.2						
50	21.9	12.7						